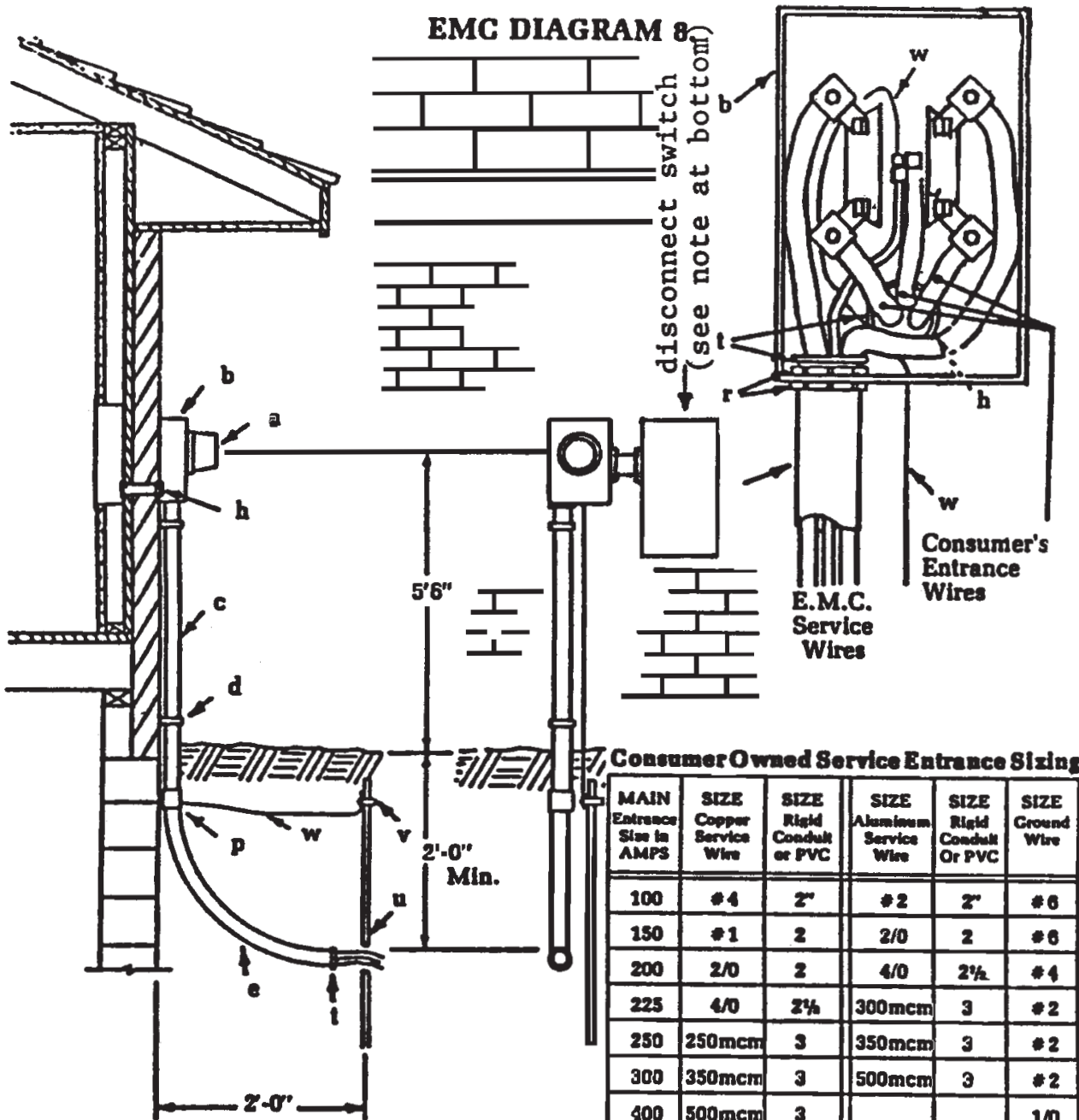


METER INSTALLATION GUIDE UNDERGROUND SOURCE

EMC DIAGRAM 8



Consumer Owned Service Entrance Sizing

MAIN Entrance Size in AMPS	SIZE Copper Service Wire	SIZE Rigid Conduit or PVC	SIZE Aluminum Service Wire	SIZE Rigid Conduit Or PVC	SIZE Ground Wire
100	#4	2"	#2	2"	#6
150	#1	2	2/0	2	#6
200	2/0	2	4/0	2½	#4
225	4/0	2½	300mcm	3	#2
250	250mcm	3	350mcm	3	#2
300	350mcm	3	500mcm	3	#2
400	500mcm	3			1/0

Item No.	Material	Item No.	Material
a 1	Meter	p 1	Pipe Connector
b 1	Meter Base	r 2	Conduit Locknuts Size as Required
c	Conduit Dia. and Length (see above chart)	t 3	Insulated Bushing Size as Required
d 2	Pipe Straps	u 1	8' long Grd. Rod ½" Galv. Rod or ¾" Galv. Pipe
e 1	Factory Made Elbow Size as Required	v 1	Ground Rod Clamp
h 1	Non-Waterproof Connector Size of Conduit	w	Bare Copper Ground Wire (see above chart)

NOTE:

1. Items a, b, and service wire to metering point are owned and maintained by E.M.C.
2. Item b is installed by house owner or electrician working for house owner.

* If a disconnect switch is required it needs to be mounted to the right of the meterbase.